

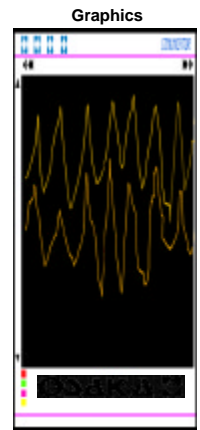
MODEL	COMUNICATOR	ACQUISITION AND SUPERVISION / SOFTWARE	REF.
-------	-------------	--	------



**COMUNICATOR Software of Management and Recording for RS485C**

With **COMUNICATOR** you will be able to realize *on-line / in-situ*:

- Record Temperature, Humidity results etc....of your installation,
- Supervise and Record alarms .
- Supervise and Record the ON/OFF relays of the process.
- Record anomalies.
- Manage and Supervise the installation by cable, net, modem.
- Manage up to 400 recording points.
- Send alarm messages by FAX or mobile phone.
- Modify SET POINTS according.
- Print graphics and data with including dates and hours.
- Real time visualisations of the values (from the premises or remote location).
- Password to manage the uses.
- ADSL / TCP-IP / Standard Modem / HF (radiofrequency), connection...



**APPLICATION**

This very simple and versatile software was specially designed to fulfil high standards of temperature recording and to supervise in real time big or medium installations.

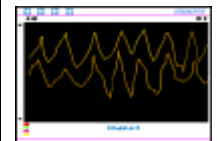
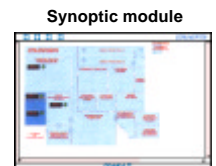
COM 6	from 1 to 6 RS485 equipments	CD ROM	RS485	The Basic version can Record or Record + Control Temperature or Data, Visualising it through Tables and graphs and Modification of the Equipment Parameters and Recording Times. Alarms record.	17002
COM PLUS	more than+6 RS485 equipments			<b>DEPENDING ON THE SOFTWARE, CAN BE MANAGED:</b> COM 6 (up to 6 RS485 equipments, max. 48 probes) COM PLUS (more than 6 RS485 equipments, max. 400 probes)	17003



**Extension Modules**

Software implementations; to use some extra functions with the basic program.  
The prices of the modules are to be added to the basic program's.

Alarm module		CD ROM		Alarms management by fax, modem or cell Phone. Added to basic module.	1700D
Synoptic module				Introduction of the Map(s) of the installation. General views and zooms of the Map(s). Added to basic module.	1700E
Remote management module				Module for Managing or acquiring records, graphics, to supervise one or several installations from remote location. Added to basic module.	1700F
Web module				Allows the Management of an Equipment different from the Control's within a same installation (Other PCUS). Added to basic module.	1700G
Automate module				Allows communications with automates. Special configurations and communication with PLC. Added to basic module.	1700H
Energy Saving module				Allows to manage Temperature changes at different times and days or regarding the consumption to obtain save energy. Added to basic module.	1700J
Special modules				Scheme of the special applications according to the necessity.	contact us



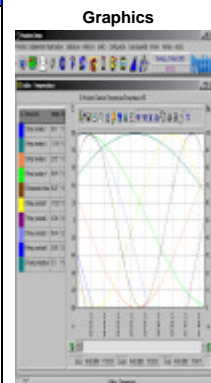
MODEL	PROSISTEC	ACQUISITION AND SUPERVISION / SOFTWARE	REF.
-------	-----------	--	------



**PROSISTEC Software for Process, Management and Recording for RS485**

PROSISTEC software is ideal to manage the industrial processes and to incorporate

- Highly configurable System of storage of data.
- Display systems of the readings at real time, by means of configurable graphs.
- Alphanumeric Display systems of the events and/or alarms of the installation.
- Systems of analyses and impression of the data stored in table and graph.
- Execution of synoptic for the monitorisation and controls processes at real time.
- System of access keys, completely configurable, to protect the access of the recordings.
- Manual or Automatic system of copy of safety of the application.
- Possibility to shut down the PC four the software.
- Choice of language of use (Spanish/English)
- Possible connection with Indicators, Controllers, Data-Loggers, OSAKA PLC's, and other brands (OMROM, TELEMECANIQUE, etc...).



Graphics

**APPLICATION**

Software made to manage and record the installations of the industrial processes in real time, in a flexible way and easy to use. (Developed according to FDA standards - regulation nº 21-CFR Chapter 11)

Model	Probes	CD ROM	RS485	Description	Ref.
PRO-MINI	up to 20 Probes	CD ROM	RS485	the MINI Version is composed by a <b>Recording + Control</b> of Data, Visualisation and printing of the graphs and tables. Access keys to the registers. Visualisation and modification of the Parameters of the Apparatuses and Times of recordings. Choice of the language. Recording of alarms. <b>To record up to 20 probes.</b>	17004
PRO-STANDARD	up to 500 Probes			Same characteristics as the PRO-MINI <b>To record up to 500 probes.</b>	17005
PRO-MAXI	UNLIMITED			Same characteristics as the PRO-MINI <b>To record an unlimited number of probes</b>	17006



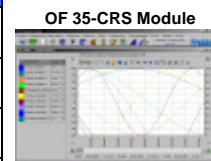
PROSISTEC

RS 485

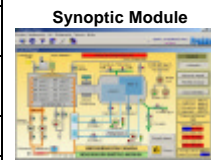
**Expandable Module**

These module are Extension of software to fulfil the functions defined on PRO-MINI program the prices of the modules are added to that of the selected program.

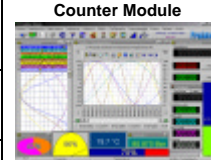
Module Name	Description	Ref.
OF 35-CRS Module	Allows the communication with the OF35-CRS controllers.	1700K
OK 83-RS Module	Allows the communication with the OK83-RS controllers.	1700L
O-DAT Module	Allows the communication with the O-DAT apparatuses.	1700M
O-DAT MULTI Module	Allows the communication with the O-DAT MULTI.	1700N
Synoptic Module	Editor of synoptic for the creation of installation drawings or synoptic of industrial processes	1700P
HIRING	Hiring of the editor of synoptic (price per 24 hours).	1700Q
Counter Module	Generate hour meters, with 10 partial meters for each one, to control the oil change, the air filters, belts.	1700R
Vocal Messages Module	Allows to transmit vocal messages, in WAV format and to send them via a telephone line to the numbers previously programmed.	1700S
WEBCAM Module	Allows real-time webcam video monitoring and recording or the visualisation of past recorded events such as: doors openings, machines, staff etc...	1700T
X-Y Graphic Module	Allows to generate graphic and numerical lists of an Analog signal compared to the other signal. Possibility of establishing an average of the X-coordinates (ex: Pressure) and of the ordinates (ex: Air velocity)	1700U
Net Server Module	Makes it possible to send the signals controlled by 1 PC to the other PC' S via TCP/IP network. One module / Computer	1700V
Net Customer Module	Allows to take data of other PC' S which have the NET SERVER module. One module / Computer	1700W
Ramp Module	Allows to generate 2 Ramps with several steps at the same time. Only with STANDARD or MAXI version.	1700X
ASCII Module	Module to convert the historical files of PROSISTEC format into standard text format, and be imported to the external programmes of data bases..	consult us
MIX Module	Allows to join or segment the historical files of PROSISTEC format without deterioration of the recordings.	consult us



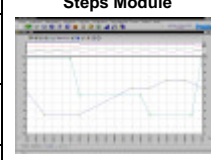
OF 35-CRS Module



Synoptic Module



Counter Module



Steps Module